

Active Ral Monoclonal antibody
Catalog Number: NL23023

Tel : 18674031376 (微信同步)

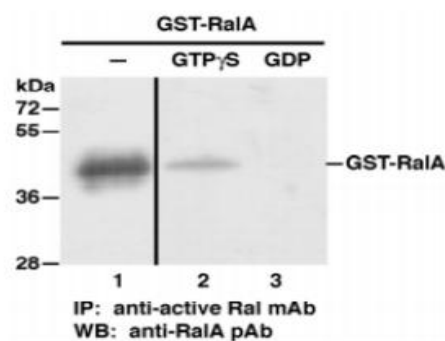
Product Uses Include

Analysis of in vivo Ral activation levels
Detection of compounds and proteins that enhance Ral activity
Detection of compounds and proteins that inhibit Ral activity
The activity of Ral in cells (tissues) was studied qualitatively

Product Description

Description	Anti-Active Ral Mouse Monoclonal Antibody
Another Name	Anti-Ral-GTP Mouse Monoclonal Antibody
Catalog Number	NL23023
Size:	30 µl
Tested Applications:	IP
Cited Applications:	IP , IHC , IF
Tested Reactivity:	Human , mouse Rat
Cited Reactivity:	Human , mouse Rat
Gene Symbol:	RAL Note : This antibody recognizes active RalA and RalB of vertebrates.
<i>Immunogen :</i>	<i>Recombinant full length protein of active RAL</i>
Concentration:	1 mg/ml
Host/Isotype:	mouse/IgG
Class:	monoclonal
Type:	Antibody
Predicted mv:	23KDa
Observed mv:	23KDa
Uniprot:	P1123 P1124
Constituents:	PBS (without Mg ²⁺ and Ca ²⁺), pH 7.4, 150 mM NaCl, 50% glycerol
Storage Conditions:	Store at -20°C for one year after shipment
Background:	The Ras-like small G proteins, RalA and RalB, are important components of Ras signaling pathways, implicated in the initiation and maintenance of tumorigenic transformation, as well as vesicle transport, apoptosis, transcription, cell migration, and cell proliferation.

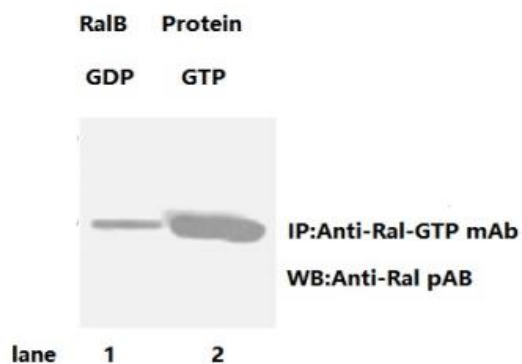
Tested Applications: IP/WB (Active RalA)



GST-RalA 蛋白 用 GDP 处理 (lane3) 或 GTP 处理 (lane2) 与 ProteinA/G 和 Anti-Ral-GTP Monoclonal Antibody (1 μ l Cat # NL23023) 进行孵育, 用 Anti- RalA Rabbit Polyclonal antibody (1:1000 稀释, Cat # NL24023A) 进行蛋白印迹分析.

GST-RalA 蛋白 (lane 1) 用 Anti- RalA Rabbit Polyclonal antibody (1:1000 稀释, Cat # NL24023A) 进行蛋白印迹分析.

Tested Applications: IP/WB (Active RalB)



RalB 蛋白 用 GDP 处理 (lane1)或 GTP 处理 (lane2)与 ProteinA/G 和 Anti-Ral-GTP Monoclonal Antibody (1 μ l Cat # NL23023) 进行孵育用 Anti- RalB Rabbit Polyclonal antibody (1:1000 稀释, Cat # NL24023)进行蛋白印迹分析.